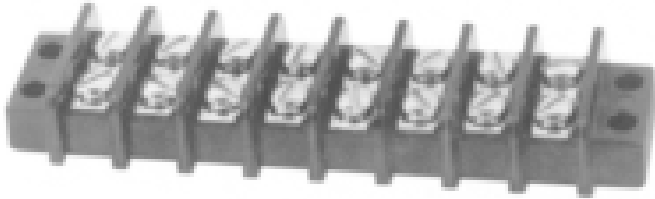


MARCO 7/16" CENTERS DOUBLE ROW TERMINAL BLOCKS

SERIES: 3300

ORDERING INFO: 3000-10
 3000: Represents Block Series
 Second two digits: Represents # Of Terminals

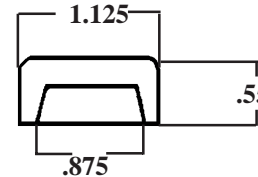
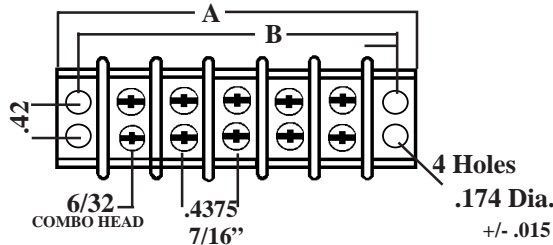


CONSTRUCTION: CLOSED BACK, FEED -THRU
TERMINAL CENTERS: .4375 (7/16")
MATERIAL: THERMOPLASTIC, COLOR: BLACK
 ALSO AVAILABLE: GLASS FILLED POLYESTER (130°C)
CURRENT RATING: 20 AMPS
VOLTAGE: 300 VOLTS
RECOMMENDED WIRE SIZE: 16-14 AGW
SCREW TYPE: 6/32 STEEL COMBO HEAD (PHILLIP/ SLOT)
 (BRASS SCREW OPTIONAL)
UL FLAME RETARDANT RATING: 94V-0

DIMENSIONS					
NUMBER OF TERM	A		NUMBER OF TERM	B	
	A	B		A	B
-02	1.625	1.312	-17	8.187	7.875
-03	2.062	1.75	-18	8.625	8.312
-04	2.50	2.187	-19	9.062	8.75
-05	2.937	2.625	-20	9.50	8.187
-06	3.375	3.062	-21	9.937	9.625
-07	3.812	3.50	-22	10.375	10.062
-08	4.25	3.937	-23	10.812	10.50
-09	4.687	4.375	-24	11.25	10.937
-10	5.125	4.812	-25	11.687	11.375
-11	5.562	5.25			
-12	6.00	5.687			
-13	6.437	6.125			
-14	6.875	6.562			
-15	7.312	7.00			
-16	7.75	7.437			

A Dimension +/- .015

C/UL Recognized
 file# E82890



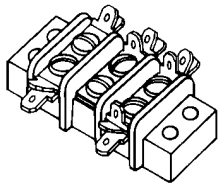
CSA Approved
 file# LR57186-1

Marker Strips Available See Marker Strip Page
 Also Available MARCO'S Top Hardware See QC'S (Quick Connect Tabs)

MARCO TERMINAL BLOCK HARDWARE

MARCO'S QC SERIES DOUBLE ROW TERMINAL BLOCK TABS

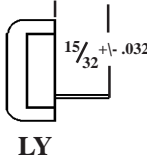
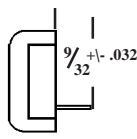
ALL QC TAB HARDWARE IS FOR 18, 442, 3300, AND 4200 SERIES
QUICK CONNECT TABS



ORDERING EXAMPLE
 Assembled on Terminal Block

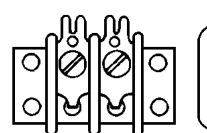
Series	#of term	Hardware
3300-10	-W/QC25,26,27	
4200-10	-W/QC25,26,27	
442-10	-W/QC25,26,27	

MARCO'S SOLDER TABS



XY SERIES

X = 200SS LUG
 Y = 300LY LUG



MARCO'S OVER THE



330 J

330 JS

MARCO TERMINAL BLOCK HARDWARE CAN BE PURCHASED SEPARATELY OR ASSEMBLED ON THE TERMINAL BLOCKS

3300-XX-DS
 4200-XX-DS

3300-XX-SS
 4200-XX-SS

3310-XX-SY
 4210-XX-SY

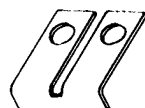
LY

3310-XX-XY
 4210-XX-XY

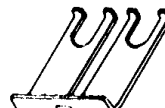
SAME PART NUMBERS FOR 18 SERIES AND 442 SERIES

SIDE JUMPERS 7/16 CENTERS

.032 THICK BRASS



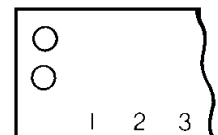
330U



330UC

AVAILABLE IN TERMINAL SIZES 2 THRU 25 POSITIONS

MARKER & INSULATOR



FOR INFORMATION SEE MARKER STRIP SECTION IN THE CATALOG