

# MARCO

PHONE: 215.463.2332  
FAX: 215.334.4990  
E MAIL: MARCOMANUF@AOL.COM

INCH-POUND

A-A-59125/29  
26 September 1997  
SUPERSEDING  
MIL-M-55164/29B  
7 March 1990

## COMMERCIAL ITEM DESCRIPTION SHEET

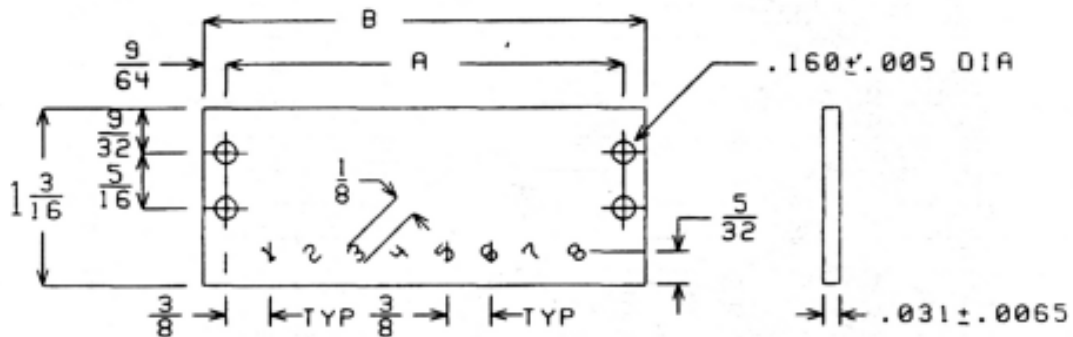
### MARKER STRIPS, FOR CLASS 37TB TERMINAL BOARDS

The General Services Administration has authorized the use of this commercial item description (CID) as a replacement for Class 37TB of MIL-M-55164/29 for all federal agencies

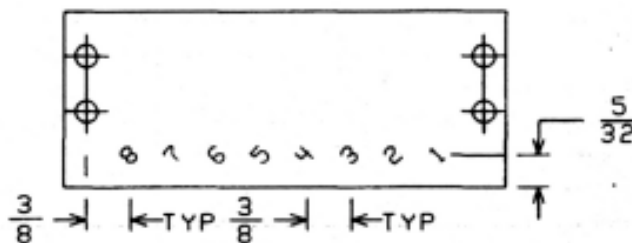
The requirements for acquiring the product described herein shall consist of this sheet and CI A-A-59125.

#### REQUIREMENTS:

Dimensions and configuration: see Figure 1 and Figure 2.



FRONT SURFACE OF MARKER STRIP



BACK SURFACE OF MARKER STRIP

Figure 1. Terminal Board Marker Strip, Type MSA37TB8.

AMSC N/A

FSC 5940

DISTRIBUTION STATEMENT A. Approved for public release; distribution is unlimited.

# MARCO

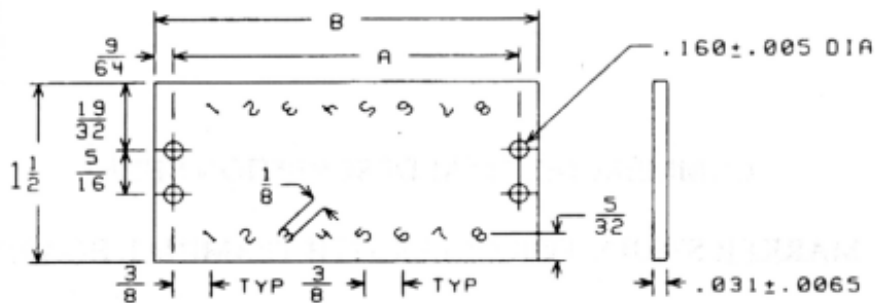


Figure 2. Terminal Board Marker Strip, Type MSB37TB8.

Table I. Dimensions.

Marker Strip Type Designation	Dimensions	
	A	B
MS 37TB2	1.125	1.422
MS 37TB3	1.500	1.797
MS 37TB4	1.875	2.172
MS 37TB5	2.250	2.562
MS 37TB6	2.625	2.938
MS 37TB7	3.000	3.312
MS 37TB8	3.375	3.688
MS 37TB9	3.766	4.062
MS 37TB10	4.141	4.438
MS 37TB11	4.516	4.812
MS 37TB12	4.891	5.188
MS 37TB13	5.266	5.562
MS 37TB14	5.641	5.938
MS 37TB15	6.016	6.312
MS 37TB16	6.391	6.688
MS 37TB17	6.766	7.062
MS 37TB18	7.141	7.438
MS 37TB19	7.516	7.828
MS 37TB20	7.906	8.203
MS 37TB21	8.281	8.578
MS 37TB22	8.656	8.953
MS 37TB23	9.031	9.328
MS 37TB24	9.406	9.703
MS 37TB25	9.781	10.078
MS 37TB26	10.156	10.453
MS 37TB27	10.531	10.828
MS 37TB28	10.906	11.219
MS 37TB29	11.281	11.594
MS 37TB30	11.672	11.969
MS 37TB31	12.031	12.359

# MARCO

PHONE: 215.463.2332

FAX: 215.334.4990

E MAIL: MARCOMANUF@AOL.COM

A-A-59125/29

## NOTES:

1. Dimensions are in inches.
2. Tolerances on terminal boards up to and including 6 inches in length:  
Dimension "A" + 0.031 to - 0.016  
Dimension "B" + 0.031 to - 0.062
3. Tolerances on terminal boards over 6 inches in length:  
Dimension "A" + 0.047 to - 0.031  
Dimension "B" + 0.047 to - 0.062
4. The drawing depicts only general design characteristics and is not intended to limit specific manufacturing processes.
5. Type of mount: bottom only.
6. Numbers shall be marked in contrasting colors to the marker strip.
7. The marker strip must align properly with the associated terminal board for mounting.
8. A single letter shall be inserted in the above type designation to specify the marking style (A, B or C).