



PHONE: 215-463-2332

Fax: 215-334-4990

E-Mail: MARCOMANUF@AOL.COM

COMMERCIAL ITEM DESCRIPTION SHEET

INCH-POUND

A-A-59125/1

26 September 1997

SUPERSEDING

MIL-T-55164/1E

28 January 1987

TERMINAL BOARDS, MOLDED, BARRIER SCREW TYPE, CLASS 37TB

The General Services Administration has authorized the use of this commercial item description (CID) as a replacement for Class 37TB of MIL-T-55164/1 for all federal agencies.

The requirements for acquiring the product described herein shall consist of this sheet and CID A-A-59125.

REQUIREMENTS:

Dimensions and configuration: see Figure 1.

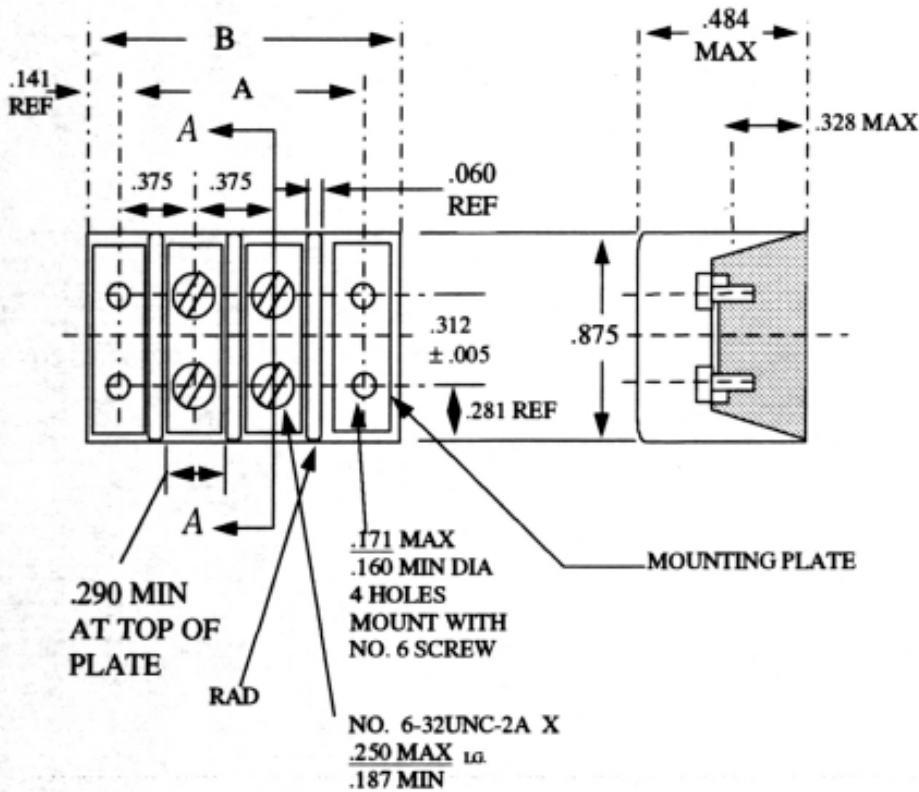


Figure 1. Terminal Board.

MARCO

A-A-59125/1

Table I. Dimensions.

Terminal Board Type Designation	Dimensions	
	A	B
37TB2	1.125	1.422
37TB3	1.500	1.797
37TB4	1.875	2.172
37TB5	2.250	2.562
37TB6	2.625	2.938
37TB7	3.000	3.312
37TB8	3.375	3.688
37TB9	3.766	4.062
37TB10	4.141	4.438
37TB11	4.516	4.812
37TB12	4.891	5.188
37TB13	5.266	5.562
37TB14	5.641	5.938
37TB15	6.016	6.312
37TB16	6.391	6.688
37TB17	6.766	7.062
37TB18	7.141	7.438
37TB19	7.516	7.828
37TB20	7.906	8.203
37TB21	8.281	8.578
37TB22	8.656	8.953
37TB23	9.031	9.328
37TB24	9.406	9.703
37TB25	9.781	10.078
37TB26	10.156	10.453
37TB27	10.531	10.828
37TB28	10.906	11.219
37TB29	11.281	11.594
37TB30	11.672	11.969
37TB31	12.031	12.359

Terminal Board class 37TB: double row, linked front, screw type

NOTES:

1. Dimensions are in inches.
2. Tolerances on terminal boards up to and including 6 inches in length:
Dimension "A" + 0.031 to - 0.016
Dimension "B" + 0.031 to - 0.062
3. Tolerances on terminal boards over 6 inches in length:
Dimension "A" + 0.047 to - 0.031
Dimension "B" + 0.047 to - 0.062
4. The drawing depicts only general design characteristics and is not intended to limit specific manufacturing processes.

Dielectric withstanding voltage: 3,000 volts rms.
Voltage rating (maximum) : 300 volts.
Current rating: 15 amps.

MARCO

MARCO

MARCO