

MARCO

PHONE: 215.463.2332
FAX: 215.334.4990
E MAIL: MARCOMANUF@AOL.COM

INCH-POUND

A-A-59125/2
26 September 1997
SUPERSEDING
MIL-T-55164/2E
28 January 1987

COMMERCIAL ITEM DESCRIPTION SHEET

TERMINAL BOARDS, MOLDED, BARRIER SCREW TYPE, CLASS 38TB

The General Services Administration has authorized the use of this commercial item description (CID) as a replacement for Class 38TB of MIL-T-55164/2 for all federal agencies.

The requirements for acquiring the product described herein shall consist of this sheet and CID A-A-59125.

REQUIREMENTS:

Dimensions and configuration: see Figure 1.

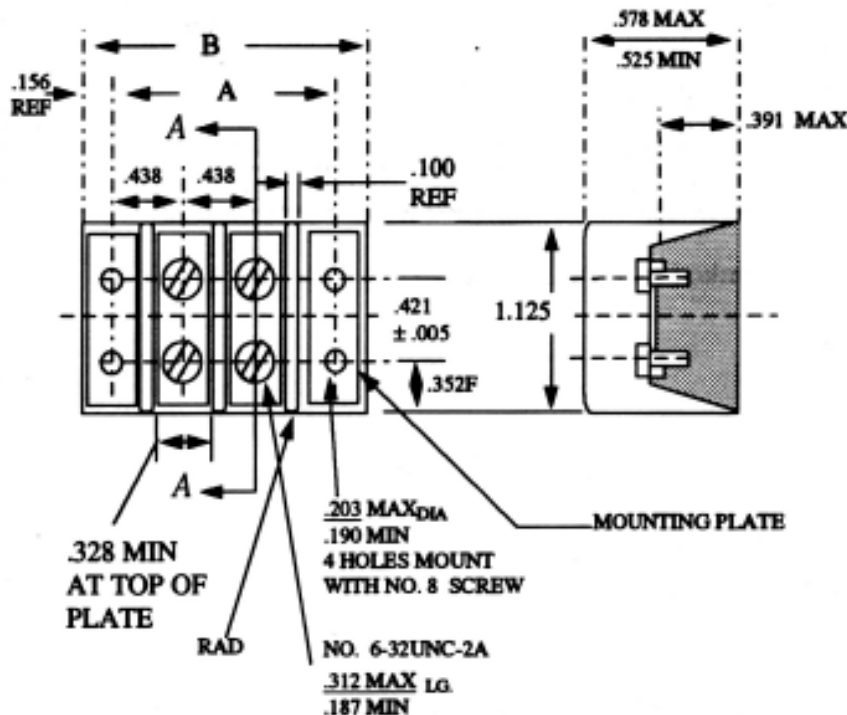


Figure 1. Terminal Board.

AMSC N/A

FSC 5940

DISTRIBUTION STATEMENT A. Approved for public release; distribution is unlimited.

MARCO

A-A-59125/2

Table I. Dimensions.

Terminal Board Type Designation	Dimensions	
	A	B
38TB2	1.312	1.641
38TB3	1.750	2.078
38TB4	2.188	2.516
38TB5	2.625	2.953
38TB6	3.062	3.391
38TB7	3.500	3.828
38TB8	3.953	4.266
38TB9	4.391	4.703
38TB10	4.828	5.141
38TB11	5.266	5.594
38TB12	5.703	6.031
38TB13	6.141	6.469
38TB14	6.578	6.906
38TB15	7.016	7.344
38TB16	7.453	7.781
38TB17	7.891	8.219
38TB18	8.328	8.656
38TB19	8.781	9.109
38TB20	9.219	9.547
38TB21	9.656	9.984
38TB22	10.094	10.422
38TB23	10.531	10.859

Terminal Board class 38TB: double row, linked front, screw type.

NOTES:

1. Dimensions are in inches.
2. Tolerances on terminal boards up to and including 6 inches in length:
Dimension "A" + 0.031 to - 0.016
Dimension "B" + 0.031 to - 0.062
3. Tolerances on terminal boards over 6 inches in length:
Dimension "A" + 0.047 to - 0.031
Dimension "B" + 0.047 to - 0.062
4. The drawing depicts only general design characteristics and is not intended to limit specific manufacturing processes.

Dielectric withstanding voltage: 3,000 volts rms.
Voltage rating (maximum): 600 volts.
Current rating: 20 amps.