

# MARCO

PHONE: 215.463.2332  
 FAX: 215.334.4990  
 E MAIL: MARCOMANUF@AOL.COM

MIL-T-55164/2E  
 28 January 1987  
 SUPERSEDING  
 MIL-T-55164/2D  
 15 December 1983

**MILITARY SPECIFICATION SHEET**  
**TERMINAL BOARDS, MOLDED, BARRIER,**  
**SCREW TYPE, CLASS 38TB**

This specification is approved for use by all Departments and Agencies of the Department of Defense.

The complete requirements for acquiring the terminal boards described herein shall consist of this document and the latest issue of Specification MIL-T-55164.

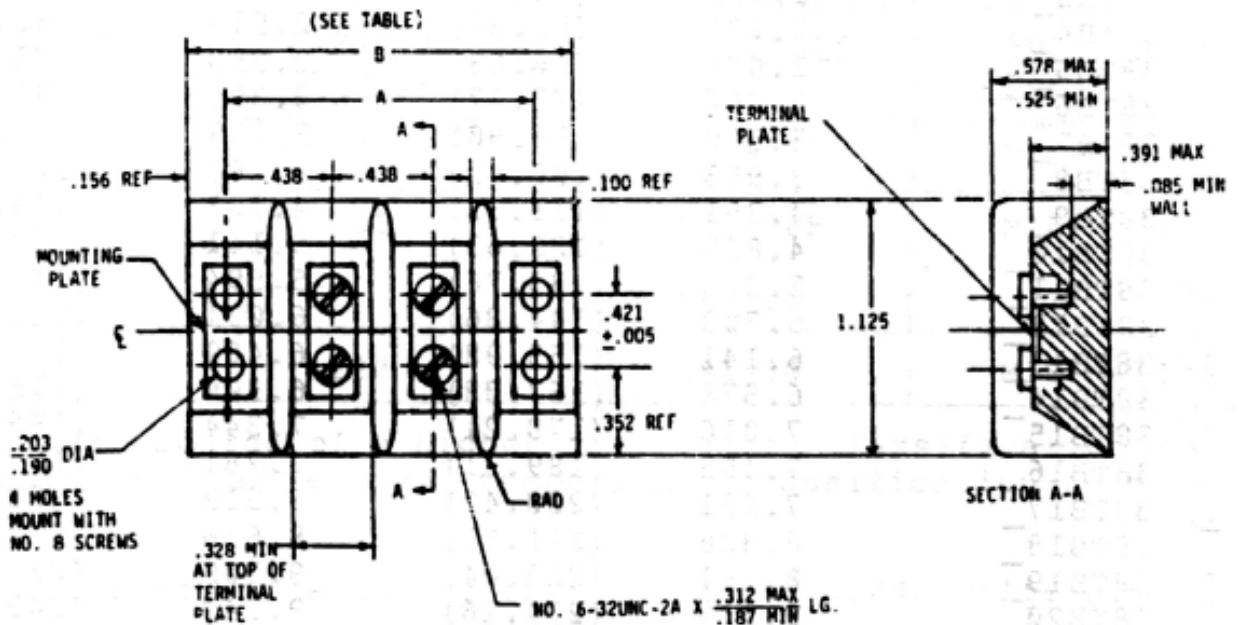


Figure 1 Terminal Board.

<u>INCHES</u>	<u>MM</u>	<u>INCHES</u>	<u>MM</u>
.005	0.13	.328	8.33
.085	2.16	.352	8.94
.100	2.54	.391	9.93
.156	3.96	.421	10.69
.187	4.75	.438	11.13
.190	4.83	.525	13.34
.203	5.16	.578	14.68
.250	6.35	1.125	28.58

# MARCO

MIL-T-55164/2E

## NOTES

1. Dimensions are in inches.
2. Metric equivalents (to the nearest .01 mm) are given for general information only.
3. Unless otherwise specified, tolerance is  $\pm .016$  inch.
4. Drawing depicts only general design characteristics and is not intended to limit specific manufacturing processes.

TABLE I Dimensions.

<u>Terminal Board Type</u> <u>Designation</u> 2/	<u>Dimensions</u> 1/			
	A		B	
	inches	(mm)	inches	(mm)
38TB2	1.312	(33.32)	1.641	(41.68)
38TB3	1.750	(44.45)	2.078	(52.78)
38TB4	2.188	(55.58)	2.516	(63.91)
38TB5	2.625	(66.68)	2.953	(75.01)
38TB6	3.062	(77.77)	3.391	(86.13)
38TB7	3.500	(88.90)	3.828	(97.23)
38TB8	3.953	(100.41)	4.266	(108.36)
38TB9	4.391	(111.53)	4.703	(119.46)
38TB10	4.828	(122.63)	5.141	(130.58)
3/ 38TB11	5.266	(133.76)	5.594	(142.09)
38TB12	5.703	(144.86)	6.031	(153.19)
3/ 38TB13	6.141	(155.98)	6.469	(164.31)
38TB14	6.578	(167.08)	6.906	(175.41)
3/ 38TB15	7.016	(178.21)	7.344	(186.54)
38TB16	7.453	(189.31)	7.781	(197.64)
3/ 38TB17	7.891	(200.43)	8.219	(208.76)
38TB18	8.328	(211.53)	8.656	(219.86)
3/ 38TB19	8.781	(223.04)	9.109	(231.37)
38TB20	9.219	(234.16)	9.547	(242.49)
3/ 38TB21	9.656	(245.26)	9.984	(253.59)
3/ 38TB22	10.094	(256.39)	10.422	(264.72)
3/ 38TB23	10.531	(267.49)	10.859	(275.82)

1/ Tolerances on terminal boards up to and including 6 inches in length:

for A dimension:  $\pm .031$ ,  $-.016$

for B dimension:  $\pm .031$ ,  $-.062$

Over 6 inches in length:

for A dimension:  $\pm .047$ ,  $-.031$

for B dimension:  $\pm .047$ ,  $-.062$

These tolerances are not meant to affect the nominal .438 inch dimension between terminal rows. The nominal .438 inch dimension shall be maintained to permit use of such auxiliary hardware as fanning strips, identification plates, etc.

# MARCO

PHONE: 215.463.2332

FAX: 215.334.4990

E MAIL: MARCOMANUF@AOL.COM

MIL-T-55164/2E

2/ Add letter B, F or H for temperature range to complete type designation.

3/ Not to be used for new design.

## REQUIREMENTS

### Terminal Board:

Dimension and Configuration: See Figure 1 and Table I.

Voltage rating (maximum): 600 volts.

Current rating: 20 amps.

Plastic material - Terminal Boards: See Table II.

Table II. Requirements for Plastics.

<u>Terminal Board Class 1/</u>	<u>Maximum Temperature (°C)</u>	<u>Materials</u>	<u>Applicable Specification</u>
B	130	GPT-30F	MIL-M-24519
F	155	GDI-30F SDG-F MAI-60	MIL-M-14
H	220	MSI-30	MIL-M-14

1/ Terminal boards of a higher temperature classification may be substituted for a lower temperature classification terminal board.

Dielectric Withstanding Test Voltage: 3,000 volts rms.

Terminal Lugs, Solder Type: TBLD 38, TBLS 38.

Terminal Board Bus (Jumper)

Connectors:

TBJA 38, TBJE 38, TBJG 38.