

MARCO

PHONE: 215.463.2332
 FAX: 215.334.4990
 E MAIL: MARCOMANUF@AOL.COM

MIL-T-55164/3F
 28 January 1987
 SUPERSEDING
 MIL-T-55164/3E
 15 December 1983

MILITARY SPECIFICATION SHEET
 TERMINAL BOARDS, MOLDED, BARRIER,
 SCREW TYPE, CLASS 39TB

This specification is approved for use by all Departments and Agencies of the Department of Defense.

The complete requirements for acquiring the terminal boards described herein shall consist of this document and the latest issue of Specification MIL-T-55164.

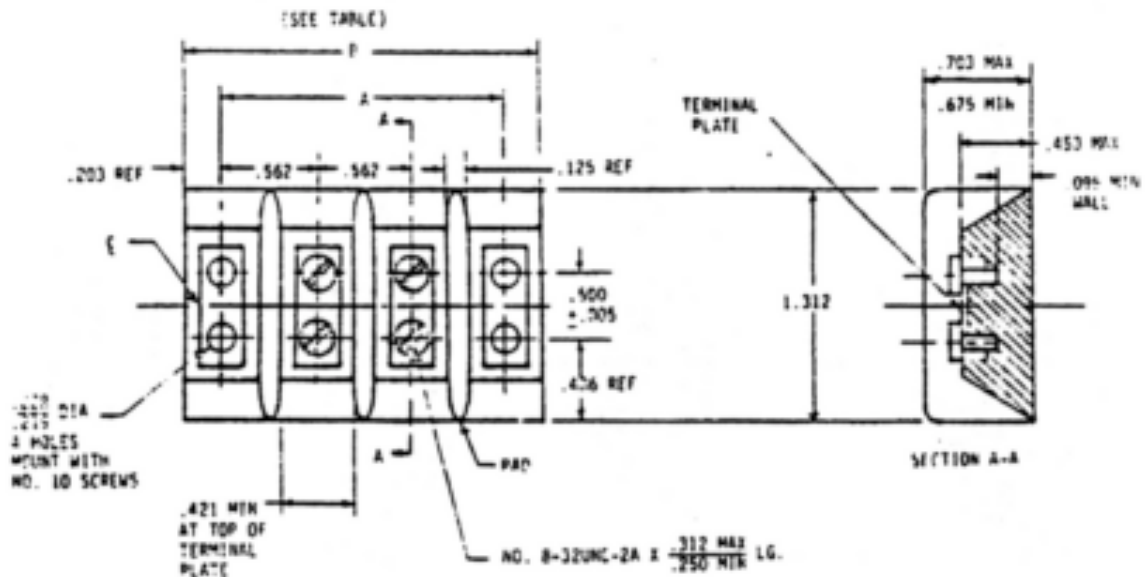


Figure 1 Terminal Board.

INCHES	MM	INCHES	MM
.005	0.13	.406	10.31
.095	2.41	.421	10.69
.125	3.18	.453	11.51
.203	5.16	.500	12.70
.219	5.56	.562	14.27
.228	5.79	.675	17.15
.250	6.35	.703	17.86
.312	7.92	1.312	33.32



PHONE: 215.463.2332

FAX: 215.334.4990

E MAIL: MARCOMANUF@AOL.COM

MIL-T-55164/3F

NOTES

1. Dimensions are in inches.
2. Metric equivalents (to the nearest .01 mm) are given for general information only.
3. Unless otherwise specified, tolerance is $\pm .016$ inch.
4. Drawing depicts only general design characteristics and is not intended to limit specific manufacturing processes.

TABLE I Dimensions.

<u>Terminal Board Type</u> <u>Designation</u> ^{2/}	<u>Dimensions</u> ^{1/}			
	A		B	
	inches	(mm)	inches	(mm)
39TB2	1.688	(42.88)	2.109	(53.57)
39TB3	2.250	(57.15)	2.688	(68.28)
39TB4	2.812	(71.42)	3.250	(82.55)
39TB5	3.375	(85.73)	3.812	(96.82)
39TB6	3.938	(100.03)	4.375	(111.13)
39TB7	4.500	(114.30)	4.938	(125.43)
39TB8	5.062	(128.57)	5.500	(139.70)
39TB9	5.641	(143.28)	6.062	(153.97)
39TB10	6.203	(157.56)	6.625	(168.28)
3/ 39TB11	6.750	(171.45)	7.188	(182.58)
39TB12	7.328	(186.13)	7.750	(196.85)
3/ 39TB13	7.891	(200.43)	8.312	(211.12)
39TB14	8.453	(214.71)	8.875	(225.43)
3/ 39TB15	9.016	(229.01)	9.438	(239.73)
39TB16	9.578	(243.28)	10.000	(254.00)
3/ 39TB17	10.141	(257.58)	10.562	(268.27)
39TB18	10.703	(271.86)	11.141	(282.98)
39TB19	11.265	(286.13)	11.703	(297.26)
39TB20	11.827	(300.14)	12.265	(311.53)
39TB21	12.389	(314.68)	12.827	(325.81)
39TB22	12.951	(328.96)	13.389	(340.08)
39TB23	13.513	(343.23)	13.951	(354.36)

^{1/} Tolerances on terminal boards up to and including 6 inches in length:

for A dimension: $\pm .031$, $-.016$

for B dimension: $\pm .031$, $-.062$

Over 6 inches in length:

for A dimension: $\pm .047$, $-.031$

for B dimension: $\pm .047$, $-.062$

These tolerances are not meant to affect the nominal .562 inch dimension between terminal rows. The nominal .562 inch dimension shall be maintained to permit use of such auxiliary hardware as fanning strips, identification plates, etc.

MARCO

PHONE: 215.463.2332

FAX: 215.334.4990

E MAIL: MARCOMANUF@AOL.COM

MIL-T-55164/3F

2/ Add letter B, F or H for temperature range to complete type designation.

3/ Not to be used for new design.

REQUIREMENTS

Terminal Boards:

Dimensions and Configuration: See Figure 1 and Table I.

Voltage rating (maximum): 600 volts.

Current rating: 30 amps.

Plastic material - Terminal Boards: See Table II.

Table II. Requirements for Plastics.

<u>Terminal Board Class 1/</u>	<u>Maximum Temperature (°C)</u>	<u>Materials</u>	<u>Applicable Specification</u>
B	130	GPT-30F	MIL-M-24519
F	155	GDI-30F SDG-F MAI-60	MIL-M-14
H	220	MSI-30	MIL-M-14

1/ Terminal boards of a higher temperature classification may be substituted for a lower temperature classification terminal board.

Dielectric withstanding test voltage: 4,000 volts rms.

Terminal Board Lug Connector: TBLD 39 or TBL5 39.