

MARCO

PHONE: 215.463.2332
FAX: 215.334.4990
E MAIL: MARCOMANUF@AOL.COM

INCH-POUND

A-A-59125/3
26 September 1997
SUPERSEDING
MIL-T-55164/3F
28 January 1987

COMMERCIAL ITEM DESCRIPTION SHEET

TERMINAL BOARDS, MOLDED, BARRIER SCREW TYPE, CLASS 39TB

The General Services Administration has authorized the use of this commercial item description (CID) as a replacement for Class 39TB of MIL-T-55164/3 for all federal agencies.

The requirements for acquiring the product described herein shall consist of this sheet and CID A-A-59125.

REQUIREMENTS:

Dimensions and configuration: see Figure 1.

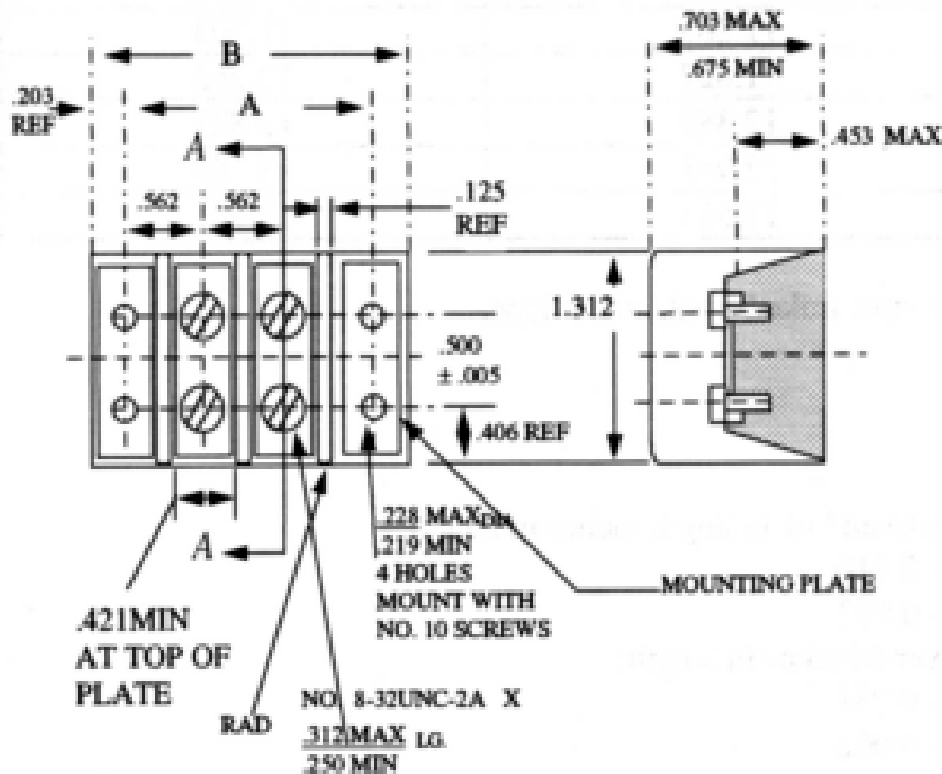


Figure 1. Terminal Board.

MARCO

PHONE: 215.463.2332

FAX: 215.334.4990

E MAIL: MARCOMANUF@AOL.COM

A-A-59125/3

Table I. Dimensions.

Terminal Board Type Designation	Dimensions	
	A	B
39TB2	1.688	2.109
39TB3	2.250	2.688
39TB4	2.812	3.250
39TB5	3.375	3.812
39TB6	3.938	4.375
39TB7	4.500	4.938
39TB8	5.062	5.500
39TB9	5.641	6.062
39TB10	6.203	6.625
39TB11	6.750	7.188
39TB12	7.328	7.750
39TB13	7.891	8.312
39TB14	8.453	8.875
39TB15	9.016	9.438
39TB16	9.578	10.000
39TB17	10.141	10.562
39TB18	10.703	11.141
39TB19	11.265	11.703
39TB20	11.827	12.265
39TB21	12.389	12.827
39TB22	12.951	13.389
39TB23	13.513	13.951

Terminal Board class 39TB: double row, linked front, screw type.

NOTES:

1. Dimensions are in inches.
2. Tolerances on terminal boards up to and including 6 inches in length:
Dimension "A" + 0.031 to - 0.016
Dimension "B" + 0.031 to - 0.062
3. Tolerances on terminal boards over 6 inches in length:
Dimension "A" + 0.047 to - 0.031
Dimension "B" + 0.047 to - 0.062
4. The drawing depicts only general design characteristics and is not intended to limit specific manufacturing processes.

Dielectric withstanding voltage: 4,000 volts rms.
Voltage rating (maximum) : 600 volts.
Current rating: 30 amps.