

PHONE: 215.463.2332

FAX: 215.334.4990

E-MAIL: MARCOMANUF@AOL.COM

MIL-T-55164/4E  
28 January 1987

SUPERSEDING  
MIL-T-55164/4D  
15 December 1983

MILITARY SPECIFICATION SHEET

TERMINAL BOARDS, MOLDED, BARRIER,

SCREW TYPE, CLASS 40TB

This specification is approved for use by all Departments and Agencies of the Department of Defense.

The complete requirements for acquiring the terminal boards described herein shall consist of this document and the latest issue of Specification MIL-T-55164.

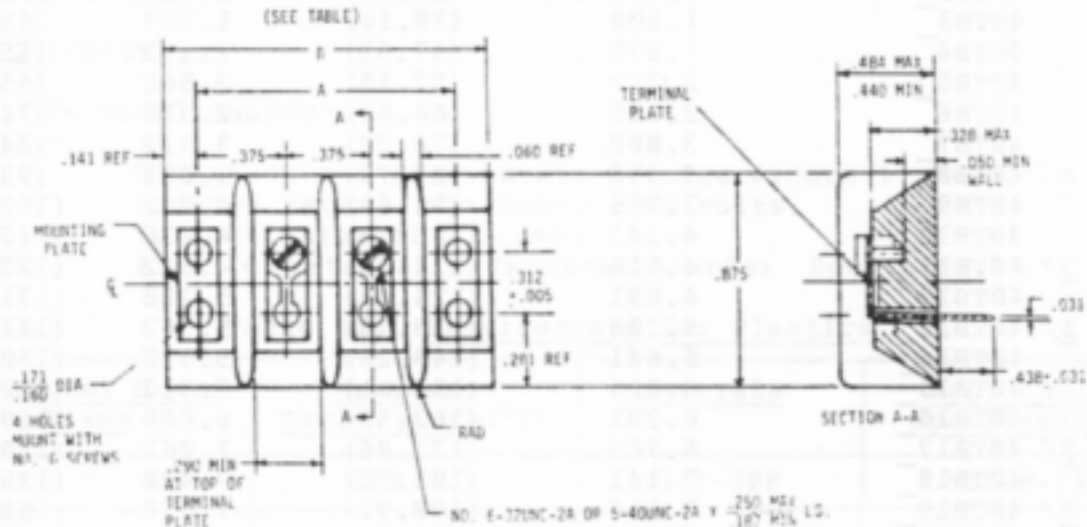


Figure 1 Terminal Board.

INCHES	MM	INCHES	MM
.005	0.13	.250	6.35
.031	0.79	.281	7.14
.050	1.27	.290	7.37
.060	1.52	.312	7.92
.141	3.58	.375	9.53
.160	4.06	.438	11.13
.171	4.34	.440	11.18
.187	4.75	.484	12.29
		.875	22.23

AMSC N/A

FSC 5940

DISTRIBUTION STATEMENT A. Approved for public release; distribution is unlimited.

# MARCO

PHONE: 215.463.2332

FAX: 215.334.4990

E-MAIL: MARCOMANUF@AOL.COM

MIL-T-55164/4E

## NOTES

1. Dimensions are in inches.
2. Metric equivalents (to the nearest .01 mm) are given for general information only.
3. Unless otherwise specified, tolerance is  $\pm .016$  inch.
4. Drawing depicts only general design characteristics and is not intended to limit specific manufacturing processes.
5. An optional feedthru may be made integral with the terminal board.

TABLE I Dimensions.

<u>Terminal Board Type</u> <u>Designation 2/</u>	<u>Dimensions 1/</u>			
	A inches	(mm)	B inches	(mm)
40TB2	1.125	(28.22)	1.422	(36.12)
40TB3	1.500	(38.10)	1.797	(45.64)
40TB4	1.875	(47.63)	2.172	(55.17)
40TB5	2.250	(57.15)	2.562	(65.07)
40TB6	2.625	(66.68)	2.938	(74.63)
40TB7	3.000	(76.20)	3.312	(84.12)
40TB8	3.375	(85.73)	3.688	(93.68)
40TB9	3.766	(95.66)	4.062	(103.17)
40TB10	4.141	(105.18)	4.438	(112.73)
3/ 40TB11	4.516	(114.76)	4.812	(122.22)
40TB12	4.891	(124.23)	5.188	(131.78)
3/ 40TB13	5.266	(133.76)	5.562	(141.27)
40TB14	5.641	(143.28)	5.938	(150.83)
40TB15	6.016	(152.81)	6.312	(160.32)
40TB16	6.391	(162.33)	6.688	(169.33)
3/ 40TB17	6.766	(171.86)	7.062	(179.37)
40TB18	7.141	(181.38)	7.438	(188.93)
3/ 40TB19	7.516	(190.91)	7.828	(198.83)
40TB20	7.906	(200.81)	8.203	(208.36)
40TB21	8.281	(210.34)	8.578	(217.88)
40TB22	8.656	(219.86)	8.953	(227.41)
40TB23	9.031	(229.39)	9.328	(236.93)
40TB24	9.406	(238.91)	9.703	(246.46)
40TB25	9.781	(248.44)	10.078	(255.98)
3/ 40TB26	10.156	(257.96)	10.453	(265.51)
40TB27	10.531	(267.49)	10.828	(275.03)
40TB28	10.906	(277.01)	11.219	(284.96)
40TB29	11.281	(286.54)	11.594	(294.49)
40TB30	11.672	(296.47)	11.969	(304.01)
40TB31	12.031	(305.59)	12.359	(313.92)

# MARCO

PHONE: 215.463.2332

FAX: 215.334.4990

E-MAIL: MARCOMANUF@AOL.COM

MIL-T-55164/4E

1/ Tolerances on terminal boards up to and including 6 inches in length:

for A dimension: +.031, -.016

for B dimension: +.031, -.062

Over 6 inches in length:

for A dimension: +.047, -.031

for B dimension: +.047, -.062

These tolerances are not meant to affect the nominal .375 inch dimension between terminal rows. The nominal .375 inch dimension shall be maintained to permit use of such auxiliary hardware as fanning strips, identification plates, etc.

2/ Add letter B, F or H for temperature range to complete type designation.

3/ Not to be used for new design.

## REQUIREMENTS

### Terminal Boards:

Dimension and Configuration: See Figure 1 and Table I.

Voltage rating (maximum): 300 volts.

Current rating: 7.5 amps.

Plastic material - Terminal Boards: See Table II.

Table II. Requirements for Plastics.

<u>Terminal Board Class 1/</u>	<u>Maximum Temperature (°C)</u>	<u>Materials</u>	<u>Applicable Specification</u>
B	130	GPT-30F	MIL-M-24519
F	155	GDI-30F SDG-F MAI-60	MIL-M-14
H	220	MSI-30	MIL-M-14

1/ Terminal boards of a higher temperature classification may be substituted for a lower temperature classification terminal board.

Dielectric withstanding test voltage: 3,000 volts rms.