

# MARCO

PHONE: 215.463.2332

FAX: 215.334.4990

E-MAIL: MARCOMANUF@AOL.COM

INCH-POUND

A-A-59125/4

26 September 1997

SUPERSEDING

MIL-T-55164/4E

28 January 1987

## COMMERCIAL ITEM DESCRIPTION SHEET

### TERMINAL BOARDS, MOLDED, BARRIER SCREW TYPE, CLASS 40TB

The General Services Administration has authorized the use of this commercial item description (CID) as a replacement for Class 40TB of MIL-T-55164/4 for all federal agencies.

The requirements for acquiring the product described herein shall consist of this sheet and CID A-A-59125.

#### REQUIREMENTS:

Dimensions and configuration: see Figure 1.

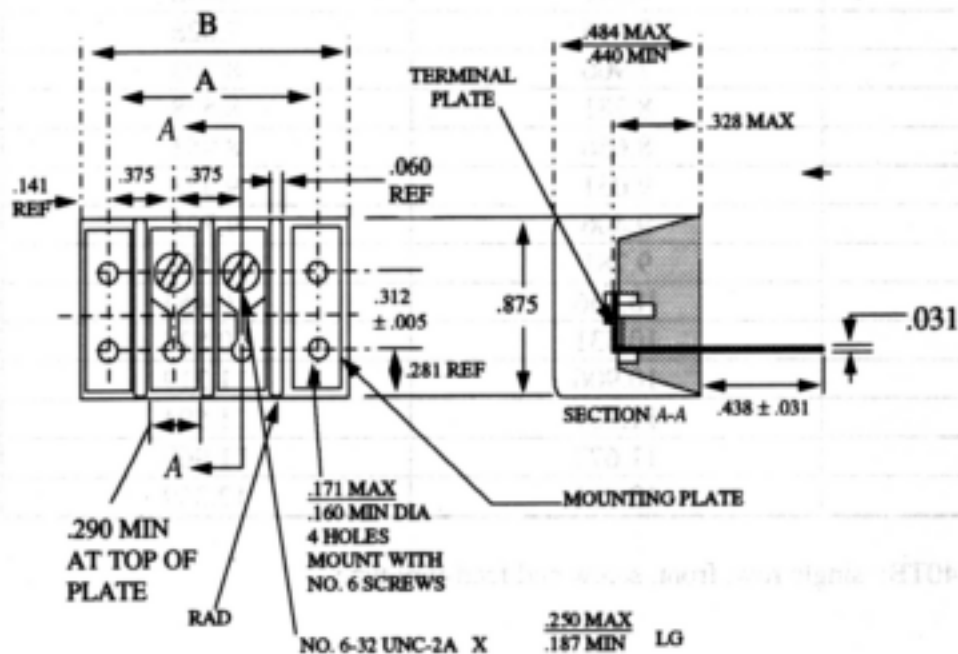


Figure 1. Terminal Board.

# MARCO

PHONE: 215.463.2332

FAX: 215.334.4990

E-MAIL: MARCOMANUF@AOL.COM

A-A-59125/4

Table I. Dimensions.

Terminal Board Type Designation	Dimensions	
	A	B
40TB2	1.125	1.422
40TB3	1.500	1.797
40TB4	1.875	2.172
40TB5	2.250	2.562
40TB6	2.625	2.938
40TB7	3.000	3.312
40TB8	3.375	3.688
40TB9	3.766	4.062
40TB10	4.141	4.438
40TB11	4.516	4.812
40TB12	4.891	5.188
40TB13	5.266	5.562
40TB14	5.641	5.938
40TB15	6.016	6.312
40TB16	6.391	6.688
40TB17	6.766	7.062
40TB18	7.141	7.438
40TB19	7.516	7.828
40TB20	7.906	8.203
40TB21	8.281	8.578
40TB22	8.656	8.953
40TB23	9.031	9.328
40TB24	9.406	9.703
40TB25	9.781	10.078
40TB26	10.156	10.453
40TB27	10.531	10.828
40TB28	10.906	11.219
40TB29	11.281	11.594
40TB30	11.672	11.969
40TB31	12.031	12.359

Terminal Board class 40TB: single row, front, screw and feed-thru type.

NOTES:

1. Dimensions are in inches.
2. Tolerances on terminal boards up to and including 6 inches in length:  
Dimension "A" + 0.031 to - 0.016  
Dimension "B" + 0.031 to - 0.062
3. Tolerance on terminal boards over 6 inches in length:  
Dimension "A" + 0.047 to - 0.031  
Dimension "B" + 0.047 to - 0.062
4. The drawing depicts only general design characteristics and is not intended to limit specific manufacturing processes.

Dielectric withstanding voltage: 3,000 volts rms.  
Voltage rating (maximum): 300 volts.  
Current rating: 7.5 amps.