

# MARCO

PHONE: 215.463.2332  
FAX: 215.334.4990  
E MAIL: MARCOMANUF@AOL.COM

INCH-POUND

A-A-59125/5  
26 September 1997  
SUPERSEDING  
MIL-T-55164/5C  
5 October 1979

## COMMERCIAL ITEM DESCRIPTION SHEET

### TERMINAL BOARDS, MOLDED, BARRIER SCREW TYPE, CLASS 41TB

The General Services Administration has authorized the use of this commercial item description (CID) as a replacement for Class 41TB of MIL-T-55164/5 for all federal agencies.

The requirements for acquiring the product described herein shall consist of this sheet and CID A-A-59125

#### REQUIREMENTS:

Dimensions and configuration: See Figure 1.

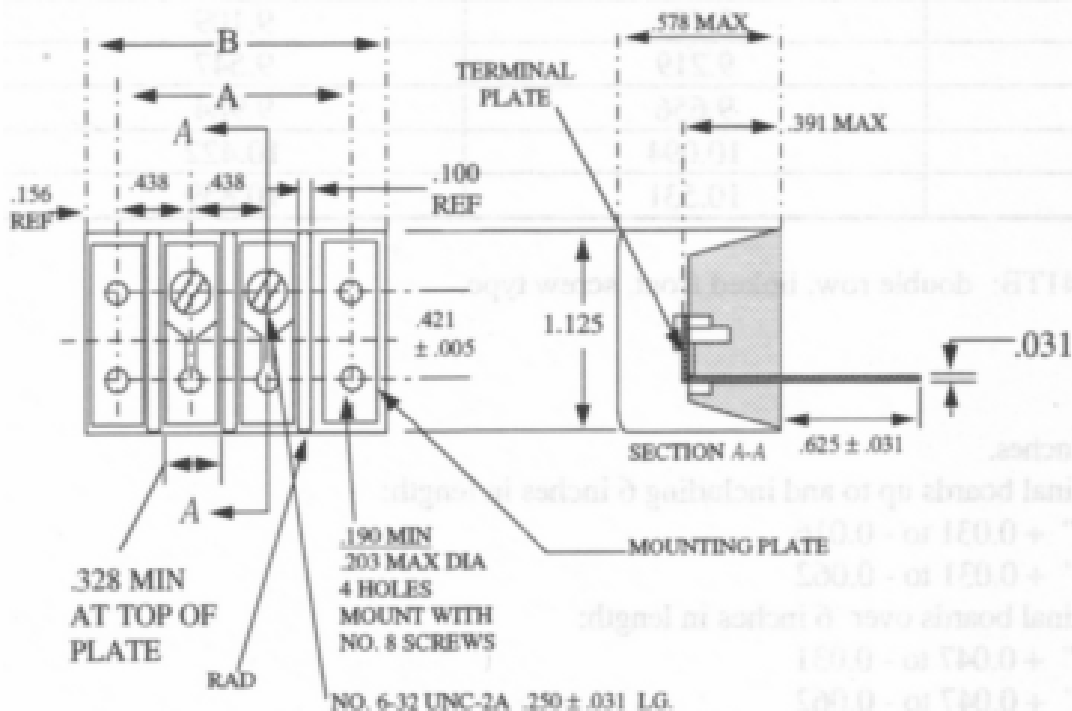


Figure 1. Terminal Board.

# MARCO

PHONE: 215.463.2332

FAX: 215.334.4990

E MAIL: MARCOMANUF@AOL.COM

A-A-59125/5

Table I. Dimensions.

Terminal Board Type Designation	Dimensions	
	A	B
41TB2	1.312	1.641
41TB3	1.750	2.078
41TB4	2.188	2.516
41TB5	2.625	2.953
41TB6	3.062	3.391
41TB7	3.500	3.828
41TB8	3.953	4.266
41TB9	4.391	4.703
41TB10	4.828	5.141
41TB11	5.266	5.594
41TB12	5.703	6.031
41TB13	6.141	6.469
41TB14	6.578	6.906
41TB15	7.016	7.344
41TB16	7.453	7.781
41TB17	7.891	8.219
41TB18	8.328	8.656
41TB19	8.781	9.109
41TB20	9.219	9.547
41TB21	9.656	9.984
41TB22	10.094	10.422
41TB23	10.531	10.859

Terminal Board class 41TB: double row, linked front, screw type.

NOTES:

1. Dimensions are in inches.
2. Tolerances on terminal boards up to and including 6 inches in length:  
Dimension "A" + 0.031 to - 0.016  
Dimension "B" + 0.031 to - 0.062
3. Tolerances on terminal boards over 6 inches in length:  
Dimension "A" + 0.047 to - 0.031  
Dimension "B" + 0.047 to - 0.062
4. The drawing depicts only general design characteristics and is not intended to limit specific manufacturing processes.

Dielectric withstanding voltage: 3,400 volts rms.  
Voltage rating (maximum) : 600 volts.  
Current rating: 10 amps.