

PHONE: 215.463.2332
 FAX: 215.334.4990
 E-MAIL: MARCOMANUF@AOL.COM

MIL-T-55164/1E
 28 January 1987
 SUPERSEDING
 MIL-T-55164/1D
 15 December 1983

MILITARY SPECIFICATION SHEET
 TERMINAL BOARDS, MOLDED, BARRIER,
 SCREW TYPE, CLASS 37TB

This specification is approved for use by all Departments and Agencies of the Department of Defense.

The complete requirements for acquiring the terminal boards described herein shall consist of this document and the latest issue of Specification MIL-T-55164.

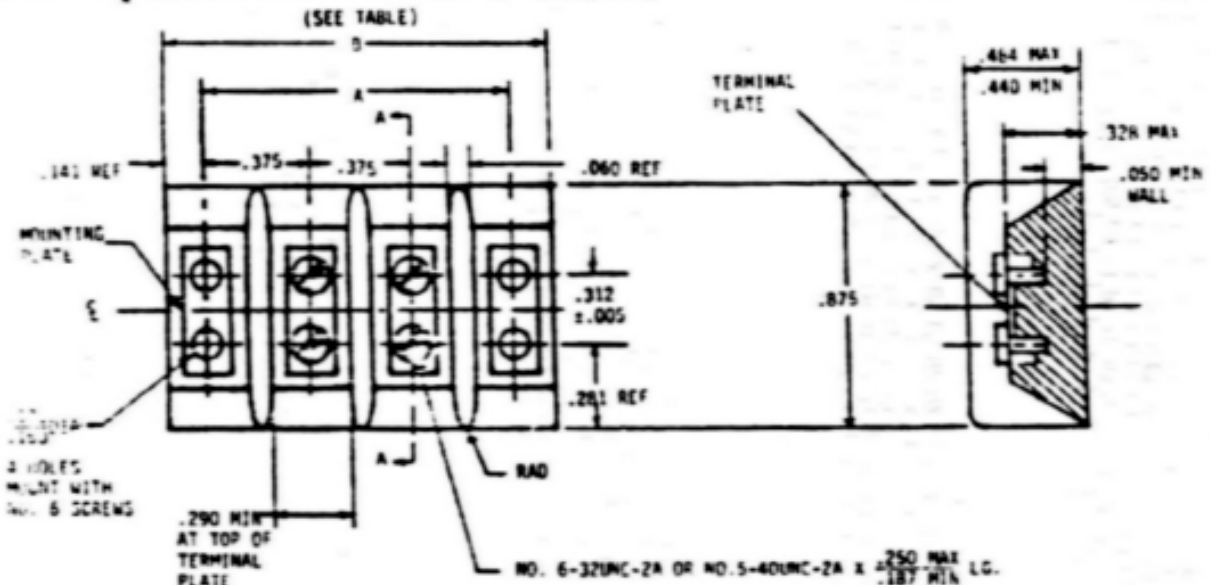


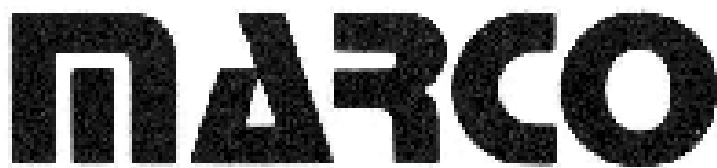
Figure 1 Terminal Board.

| INCHES | MM | INCHES | MM |
|--------|------|--------|-------|
| .005 | 0.13 | .281 | 7.14 |
| .031 | 0.79 | .290 | 7.37 |
| .050 | 1.27 | .312 | 7.92 |
| .060 | 1.52 | .328 | 8.33 |
| .141 | 3.58 | .375 | 9.53 |
| .160 | 4.06 | .440 | 11.18 |
| .171 | 4.34 | .484 | 12.29 |
| .187 | 4.75 | .875 | 22.23 |
| .250 | 6.35 | | |

AMSC N/A

FSC 5940

DISTRIBUTION STATEMENT A. Approved for public release;
 distribution is unlimited.



MIL-T-55164/1E

NOTES

1. Dimensions are in inches.
2. Metric equivalents (to the nearest .01mm) are given for general information only.
3. Unless otherwise specified, tolerance is $\pm .016$ inch.
4. Drawing depicts only general design characteristics and is not intended to limit specific manufacturing processes

TABLE I Dimensions.

| <u>Terminal Board Type</u> <u>Designation 2/</u> | <u>Dimensions 1/</u> | | | |
|---|----------------------|----------|--------|----------|
| | A | (mm) | B | (mm) |
| 37TB2 | 1.125 | (28.22) | 1.422 | (36.12) |
| 37TB3 | 1.500 | (38.10) | 1.797 | (45.64) |
| 37TB4 | 1.875 | (47.63) | 2.172 | (55.17) |
| 37TB5 | 2.250 | (57.15) | 2.562 | (65.07) |
| 37TB6 | 2.625 | (66.68) | 2.938 | (74.63) |
| 37TB7 | 3.000 | (76.20) | 3.312 | (84.12) |
| 37TB8 | 3.375 | (85.73) | 3.688 | (93.68) |
| 37TB9 | 3.766 | (95.66) | 4.062 | (103.17) |
| 37TB10 | 4.141 | (105.18) | 4.438 | (112.73) |
| 3/ 37TB11 | 4.516 | (114.76) | 4.812 | (122.22) |
| 37TB12 | 4.891 | (124.23) | 5.188 | (131.78) |
| 3/ 37TB13 | 5.266 | (133.76) | 5.562 | (141.27) |
| 37TB14 | 5.641 | (143.28) | 5.938 | (150.83) |
| 3/ 37TB15 | 6.016 | (152.83) | 6.312 | (160.32) |
| 37TB16 | 6.391 | (162.33) | 6.688 | (169.88) |
| 3/ 37TB17 | 6.766 | (171.86) | 7.062 | (179.37) |
| 37TB18 | 7.141 | (181.38) | 7.438 | (188.93) |
| 3/ 37TB19 | 7.516 | (190.91) | 7.828 | (198.83) |
| 37TB20 | 7.906 | (200.81) | 8.203 | (208.36) |
| 37TB21 | 8.281 | (210.34) | 8.578 | (217.88) |
| 37TB22 | 8.656 | (219.86) | 8.953 | (227.41) |
| 37TB23 | 9.031 | (229.39) | 9.328 | (236.93) |
| 37TB24 | 9.406 | (238.91) | 9.703 | (246.46) |
| 37TB25 | 9.781 | (248.44) | 10.078 | (255.98) |
| 37TB26 | 10.156 | (257.96) | 10.453 | (265.51) |
| 37TB27 | 10.531 | (267.49) | 10.828 | (275.03) |
| 37TB28 | 10.906 | (277.01) | 11.219 | (284.96) |
| 37TB29 | 11.281 | (286.54) | 11.594 | (294.49) |
| 37TB30 | 11.672 | (296.47) | 11.969 | (304.01) |
| 37TB31 | 12.031 | (305.39) | 12.359 | (313.92) |

1/ Tolerances on terminal boards up to and including 6 inches in length:

for A dimension $\pm .031$, $-.016$
 for B dimension $\pm .031$, $-.062$

Over 6 inches in length:

for A dimension $\pm .047$, $-.031$
 for B dimension $\pm .047$, $-.062$

MARCO

MIL-T-55164/1E

These tolerances are not meant to affect the nominal .375 inch dimension between terminal rows. The nominal .375 dimension shall be maintained to permit use of such auxiliary hardware as fanning strips, identification plates, etc.

2/ Add letter B, F or H for temperature range to complete type designation.

3/ Not to be used for new design.

REQUIREMENTS

Terminal Boards:

Dimensions and Configuration: See Figure 1 and Table I.

Voltage rating (maximum): 300 volts.

Current Rating: 15 amps.

Plastic material - Terminal Boards: See Table II.

Table II. Requirements for Plastics.

| <u>Terminal Board Class 1/</u> | <u>Maximum Temperature (°C)</u> | <u>Materials</u> | <u>Applicable Specification</u> |
|--------------------------------|---------------------------------|----------------------------|---------------------------------|
| B | 130 | GPT-30F | MIL-M-24519 |
| F | 155 | GDI-30F SDG-F MAI-60 | MIL-M-14 |
| H | 220 | MSI-30 | MIL-M-14 |

1/ Terminal boards of a higher temperature classification may be substituted for a lower temperature classification terminal board.

Dielectric Withstanding Test Voltage: 3,000 volts rms.

Terminal Lugs, Solder Type: TBLD 37, TBLS 37.

Terminal Board Bus (Jumper)

Connectors:

TBJA37, TBJD37, or TBJF37.