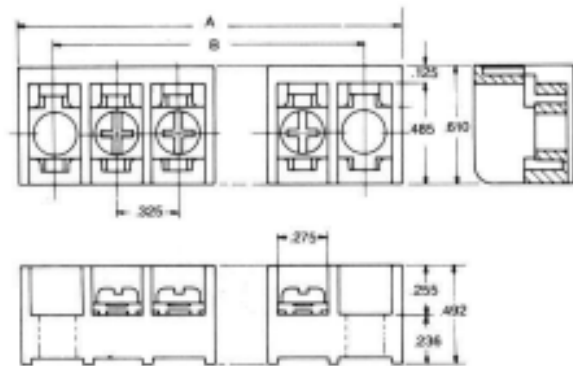
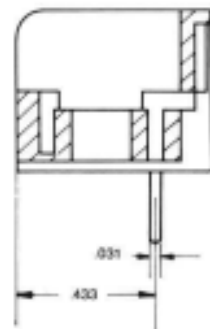
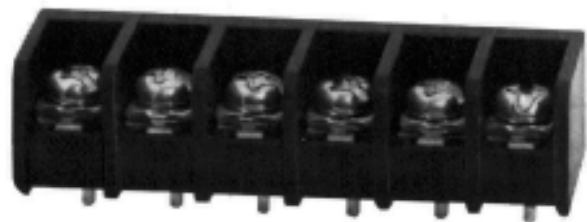


T920 SERIES-TRI BARRIER

.325 CENTERS



Rating 15A 250V

Insulation Withstands Voltage AC1500V/min

Insulation Resistance 1000M Ω or more at DC500V

Materials Thermoplastic (UL94V-0) black

Terminals Brass tin plated

POLES	2P	3P	4P	5P	6P	7P	8P	9P	10P	11P	12P
A	1.38	1.70	2.03	2.35	2.68	3.00	3.33	3.65	3.98	4.30	4.63
B	.97	1.30	1.62	1.95	2.27	2.60	2.92	3.25	3.57	3.90	4.22
POLES	13P	14P	15P	16P	17P	18P	19P	20P	21P	22P	23P
A	4.95	5.28	5.60	5.92	6.30	6.61	6.90	7.22	7.55	7.87	8.20
B	4.55	4.87	5.20	5.52	5.85	6.17	6.50	6.82	7.15	7.47	7.80
POLES	24P	25P	26P	27P	28P	29P	30P	31P	32P	33P	34P
A	8.52	8.85	9.17	9.50	9.82	10.15	10.47				
B	8.12	8.44	8.77	9.09	9.42	9.47	10.07				

Note: A + B dimensions for terminal blocks with mounting ends