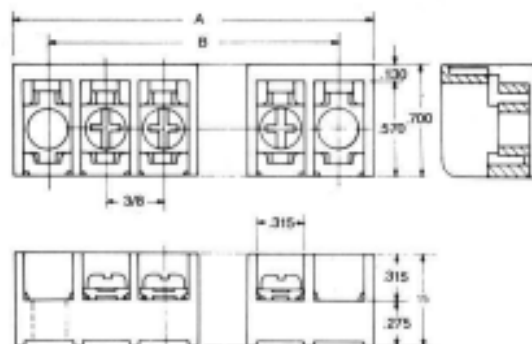
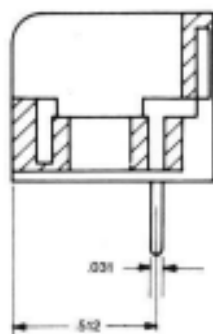
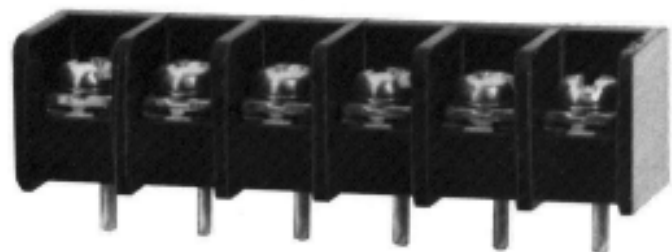


T950 SERIES-TRI BARRIERS

.375 CENTERS



Rating 15A 250V
Insulation Withstands Voltage AC1500V/min
Insulation Resistance 1000MΩ or more at DC500V
Materials Thermoplastic (UL94V-0) black
Terminals Brass tin plated

POLES	2P	3P	4P	5P	6P	7P	8P	9P	10P	11P	12P
A	1.57	1.95	2.32	2.70	3.07	3.44	3.82	4.19	4.57	4.94	5.31
B	1.12	1.50	1.87	2.24	2.62	2.99	3.37	3.74	4.11	4.49	4.86
POLES	13P	14P	15P	16P	17P	18P	19P	20P	21P	22P	23P
A	5.69	6.06	6.44	6.81	7.18	7.56	8.29	8.31	8.68	9.05	9.43
B	5.24	5.61	5.98	6.36	6.73	7.11	7.48	7.85	8.23	8.60	8.98
POLES	24P	25P	26P	27P	28P	29P	30P	31P	32P	33P	34P
A	9.80										
B	9.35										

Note: A + B dimensions for terminal blocks with mounting ends